

ELEMAX



TRANSENNE PEDONALI



PEDESTRIAN BARRIERS



BARRIERE DE POLICE

CATALOGUE 03/2020



TRANSENNE PEDONALI ECONOMY

EMS-225

EMS-226

La transenna pedonale EMS-225 oppure EMS-226 viene utilizzata per proteggere temporaneamente eventi di ogni tipo, oppure per limitare aree ad accesso limitato oltre come barriere di protezione per lavori edili e stradali. Le gambe robuste assicurano un posizionamento stabile.

The EMS-225 or EMS-226 pedestrian barrier is used to temporarily protect all types of events, or to limit areas with limited access as well as protective barriers for construction and road works. The sturdy legs ensure stable positioning.

La barriera piétonnière EMS-225 ou EMS-226 est utilisée pour protéger temporaire-ment tous les types d'événements, ou pour limiter les zones à accès limité, ainsi que des barrières de protection pour la construction et les travaux routiers. Les jambes robustes assurent un positionnement stable.

HOT GALVANIZED STEEL

| ARTICLE | LENGHT MM. | HEIGHT MM. | MM TUBE DIAMETER | INTERNAL BARS MM. | BARS NR. | WEIGHT KG. |
|---------|---------------|---------------|---------------------|----------------------|-------------|---------------|
| EMS-225 | 2000 | 1100 | 32 | 8 | 11 | 9,5 |
| EMS-226 | 2500 | 1100 | 32 | 8 | 15 | 13,0 |

ELEMAX



TRANSENNE PEDONALI

EMS-200-FR

EMS-250-FR

La transenna pedonale EMS-200-FR oppure EMS-250-FR viene utilizzata per proteggere temporaneamente eventi di ogni tipo, oppure per limitare aree ad accesso limitato oltre come barriere di protezione per lavori edili e stradali. Le gambe robuste assicurano un posizionamento stabile.

The EMS-200-FR or EMS-250-FR police barrier is used to temporarily protect all types of events, or to limit areas with limited access as well as protective barriers for construction and road works. The sturdy legs ensure stable positioning.

La barrière de police EMS-200-FR ou EMS-250-FR est utilisée pour protéger temporairement tous les types d'événements, ou pour limiter les zones à accès limité, ainsi que des barrières de protection pour la construction et les travaux routiers. Les jambes robustes assurent un positionnement stable.

HOT GALVANIZED STEEL

| ARTICLE | LENGHT MM. | HEIGHT MM. | MM TUBE DIAMETER | INTERNAL BARS MM. | BARS NR. | WEIGHT KG. |
|------------|---------------|---------------|---------------------|----------------------|-------------|---------------|
| EMS-100-FR | 1000 | 1090 | 33,7 | 16 | 6 | 7,0 |
| EMS-200-FR | 2000 | 1090 | 33,7 | 16 | 14 | 14,2 |
| EMS-250-FR | 2500 | 1090 | 33,7 | 16 | 18 | 17,2 |

ELEMAX



TRANSENNE PEDONALI

EMS-201-FR

EMS-251-FR

La transenna pedonale EMS-201-FR oppure EMS-251-FR viene utilizzata per proteggere temporaneamente eventi di ogni tipo, oppure per limitare aree ad accesso limitato oltre come barriere di protezione per lavori edili e stradali. Le gambe robuste assicurano un posizionamento stabile.

The EMS-201-FR or EMS-251-FR police barrier is used to temporarily protect all types of events, or to limit areas with limited access as well as protective barriers for construction and road works. The sturdy legs ensure stable positioning.

La barrière de police EMS-201-FR ou EMS-251-FR est utilisée pour protéger temporairement tous les types d'événements, ou pour limiter les zones à accès limité, ainsi que des barrières de protection pour la construction et les travaux routiers. Les jambes robustes assurent un positionnement stable.

HOT GALVANIZED STEEL

| ARTICLE | LENGHT MM. | HEIGHT MM. | MM TUBE DIAMETER | INTERNAL BARS MM. | BARS NR. | WEIGHT KG. |
|------------|---------------|---------------|---------------------|----------------------|-------------|---------------|
| EMS-201-FR | 2000 | 1100 | 33,7 | 16 | 14 | 16,0 |
| EMS-251-FR | 2500 | 1100 | 33,7 | 16 | 18 | 19,2 |

ELEMAX



TRANSENNE PEDONALI INTERNATIONAL

EMS-200-DE

EMS-250-DE

La transenna pedonale EMS-200-DE oppure EMS-250-DE viene utilizzata per proteggere temporaneamente eventi di ogni tipo, oppure per limitare aree ad accesso limitato oltre come barriere di protezione per lavori edili e stradali. Le gambe robuste assicurano un posizionamento stabile.

The EMS-200-DE or EMS-250-DE international barrier is used to temporarily protect all types of events, or to limit areas with limited access as well as protective barriers for construction and road works. The sturdy legs ensure stable positioning.

La barrière internationale EMS-200-DE ou EMS-250-DE est utilisée pour protéger temporairement tous les types d'événements, ou pour limiter les zones à accès limité, ainsi que des barrières de protection pour la construction et les travaux routiers. Les jambes robustes assurent un positionnement stable.

HOT GALVANIZED STEEL

| ARTICLE | LENGHT MM. | HEIGHT MM. | MM TUBE DIAMETER | INTERNAL BARS MM. | BARS NR. | WEIGHT KG. |
|------------|---------------|---------------|---------------------|----------------------|-------------|---------------|
| EMS-200-DE | 2000 | 1100 | 33,7 | 16 | 14 | 15,5 |
| EMS-300-DE | 2000 | 1100 | 38 | 16 | 15 | 20,7 |
| EMS-250-DE | 2500 | 1100 | 33,7 | 16 | 18 | 18,0 |
| EMS-350-DE | 2500 | 1100 | 38 | 16 | 19 | 24,0 |

ELEMAX



EMS-200-DEIF

TRANSENNE PEDONALI INTERNATIONAL

EMS-200-DEFF

EMS-250-DEFF

La transenna pedonale EMS-200-DEFF oppure EMS-250-DEFF viene utilizzata per proteggere temporaneamente eventi di ogni tipo, oppure per limitare aree ad accesso limitato oltre come barriere di protezione per lavori edili e stradali. Le gambe robuste assicurano un posizionamento stabile.

VERSIONE CON I PIEDI INCLINATI EMS-200-DEIF

The EMS-200-DEFF or EMS-250-DEFF international barrier is used to temporarily protect all types of events, or to limit areas with limited access as well as protective barriers for construction and road works. The sturdy legs ensure stable positioning.

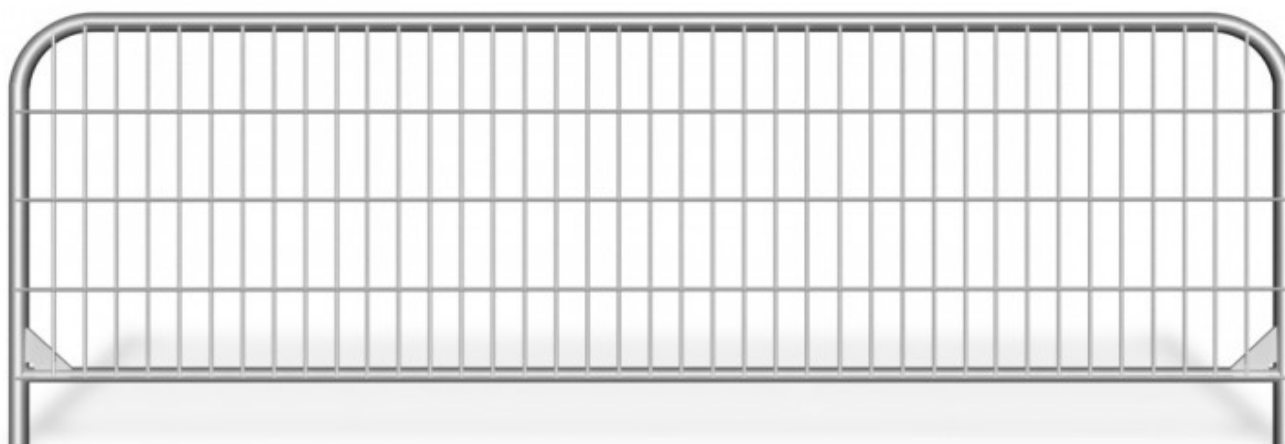
INCLINED FEET EMS-200-DEIF

La barrière international EMS-200-DEFF ou EMS-250-DEFF est utilisée pour protéger temporairement tous les types d'événements, ou pour limiter les zones à accès limité, ainsi que des barrières de protection pour la construction et les travaux routiers. Les jambes robustes assurent un positionnement stable.

PIEDS INCLINES EMS-200-DEIF

HOT GALVANIZED STEEL

| ARTICLE | LENGHT MM. | HEIGHT MM. | MM TUBE DIAMETER | INTERNAL BARS MM. | BARS NR. | WEIGHT KG. |
|--------------|------------|------------|------------------|-------------------|----------|------------|
| EMS-200-DEFF | 2000 | 1100 | 33,7 | 16 | 14 | 15,0 |
| EMS-300-DEFF | 2000 | 1100 | 38 | 16 | 15 | 18,5 |
| EMS-250-DEFF | 2500 | 1100 | 33,7 | 16 | 18 | 17,5 |
| EMS-350-DEFF | 2500 | 1100 | 38 | 16 | 19 | 21,5 |



TRANSENNE PEDONALI TEMPORANEE **BIG MESH** **EM-306-BM**

La transenna pedonale **EM-306-BM** viene utilizzata per proteggere temporaneamente eventi di ogni tipo, oppure per limitare aree ad accesso limitato oltre come barriere di protezione per lavori edili e stradali. Le gambe robuste assicurano un posizionamento stabile.

The **EM-306-BM** pedestrian barrier is used to temporarily protect all types of events, or to limit areas with limited access as well as protective barriers for construction and road works. The sturdy legs ensure stable positioning.

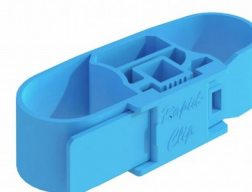
La barrière piétonnière **EM-306-BM** est utilisée pour protéger temporairement tous les types d'événements, ou pour limiter les zones à accès limité, ainsi que des barrières de protection pour la construction et les travaux routiers. Les jambes robustes assurent un positionnement stable.

HOT GALVANIZED STEEL

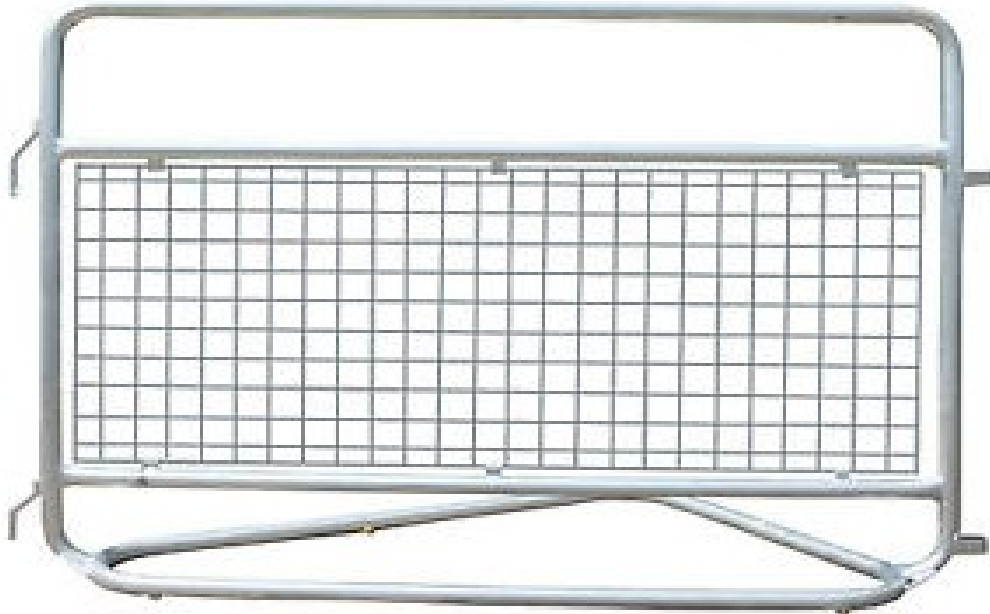
| LENGHT MM. | HEIGHT MM. | MM TUBE DIAMETER | WELDED WIRE MESH | WEIGHT KG. |
|---------------|---------------|---------------------|---------------------|---------------|
| 3450 | 1200 | 38 | 2,2 x 3,2 | 12,1 |



EM-203MK



EM-210.P



TRANSENNE DI SICUREZZA PER EVENTI

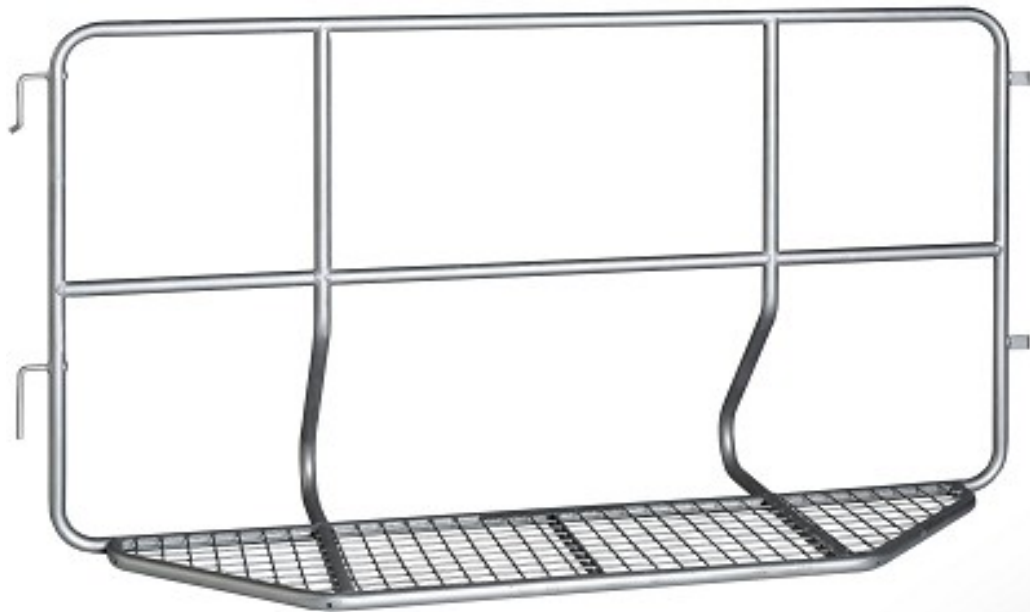
EMS-1501

La transenna di sicurezza **EMS-1501** viene utilizzata per proteggere temporaneamente eventi di ogni tipo, oppure per limitare aree ad accesso limitato oltre come barriere di protezione per lavori edili e stradali.

The **EMS-1501 security barrier** is used to temporarily protect all types of events, or to limit areas with limited access as well as protective barriers for construction and road works.

La **barrière de sécurité EMS-1501** est utilisée pour protéger temporairement tous les types d'événements, ou pour limiter les zones à accès limité, ainsi que des barrières de protection pour la construction et les travaux routiers.

| LENGHT | HEIGHT | WIDTH | MM. TUBE | MM. MESH | MM. WIRE | WEIGHT |
|--------|--------|-------|----------|------------|-----------|--------|
| MM. | MM. | MM. | DIAMETER | DIMENSIONS | THICKNESS | Kg. |
| 1526 | 1065 | 705 | 38 | 45 x 45 | 2,2 x 3,2 | 26,0 |



TRANSENNE DI SICUREZZA PER EVENTI

EMS-1520

La transenna di sicurezza EMS-1520 viene utilizzata per proteggere temporaneamente eventi di ogni tipo, oppure per limitare aree ad accesso limitato oltre come barriere di protezione per lavori edili e stradali.

The EMS-1520 security barrier is used to temporarily protect all types of events, or to limit areas with limited access as well as protective barriers for construction and road works.

La barrière de sécurité EMS-1520 est utilisée pour protéger temporairement tous les types d'événements, ou pour limiter les zones à accès limité, ainsi que des barrières de protection pour la construction et les travaux routiers.

HOT GALVANIZED STEEL

| LENGHT MM. | HEIGHT MM. | MM. TUBE DIAMETER | WEIGHT KG. |
|---------------|---------------|----------------------|---------------|
| 2000 | 1000 | 33,7 | 35,4 |

ELEMAX GROUP LTD.
BUSINESS PARK VARNA
BUILDING 8, FLOOR 4
9009 VARNA – BULGARIA (EUROPE)

TEL. +359 889578694
+39 3348090326
GIANCARLO.PEREGO@ELEMAX-EVENT.COM